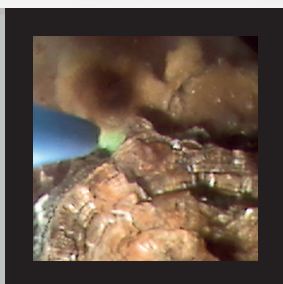




COBRA VISION

Dual-Channel Flexible Sensor Ureteroscope

- 270° bidirectional deflection.
- Two independent channels (3.6 Fr. and 2.4 Fr.) for the simultaneous use of tipless baskets and laser fibers.
- Atraumatic 5.2 Fr. beveled distal tip for easy insertion.
- 9.9 Fr. sheath.
- Integrated LED illumination and distal image sensor.
- Two programmable camera buttons.
- Special Imaging Modes (SIM).
- Ergonomic handle and axial cable.



Sensor Ureteroscopy Picture



Two Independent Channels

Thermedx® FluidSmart® Fluid Management System

Fluid Warming For Cystoscopy, TURP, PCNL, Ureteroscopy

- Fluid Warming
- On-demand fluid warming to help prevent intraoperative hypothermia
- Adjustable Pressure Settings to maintain control of the surgical site
- Proprietary Luer-Lock Adapters
- Provides constant pressure for even distension

Richard Wolf Medical Instruments

353 Corporate Woods Parkway, Vernon Hills, Illinois 60061

2000-02.02-0220USA

www.richardwolfusa.com



Thermedx



The Needle 4.5 Fr. Semi-Rigid Ureteroscope

- Small 4.5 Fr. self-dilating distal tip—easy entry with less trauma to the patient.
- 3 Fr. working channel allows for a variety of accessory instruments.
- 315 mm and 430 mm working lengths available—suitable for adult patients and smaller anatomy.

The D.O.C 6.5 Fr. Dual-Channel Semi-Rigid Ureteroscope

- 6.5 Fr. atraumatic distal tip combines small size without sacrificing utility.
- Dual, independent operating channels—use two instruments simultaneously.



mamba VISION

Flexible Sensor Cystoscope

- 210° bidirectional deflection for precise control and navigation.
- Large 7.5 Fr. working channel for optimal irrigation.
- Atraumatic 11.5 Fr. beveled distal tip for easy insertion and enhanced patient comfort.
- 16.2 Fr. sheath.
- Two distally-integrated LEDs for superior illumination.
- Two programmable camera buttons.
- Special Imaging Modes (SIM).
- Ergonomic handle and axial cable.



Sensor Cystoscope Picture

210° Bidirectional Deflection

Richard Wolf Medical Instruments

353 Corporate Woods Parkway, Vernon Hills, Illinois 60061

2000-02.02-0220USA

www.richardwolfusa.com